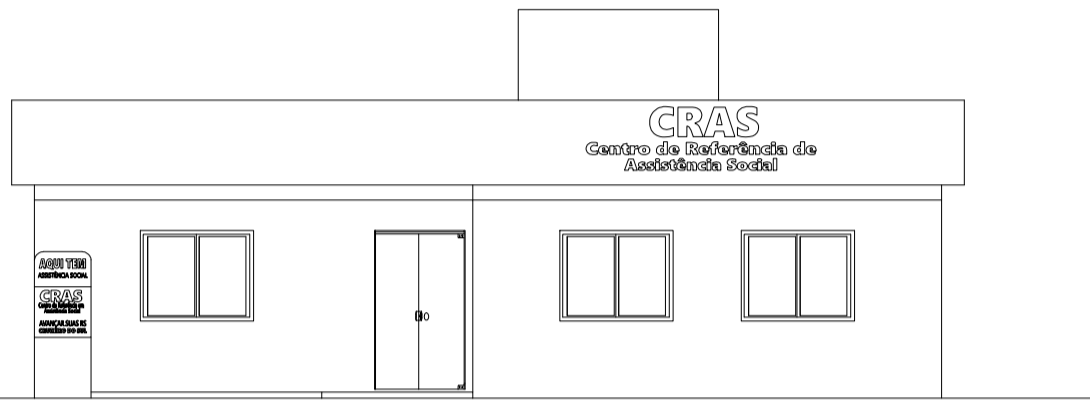
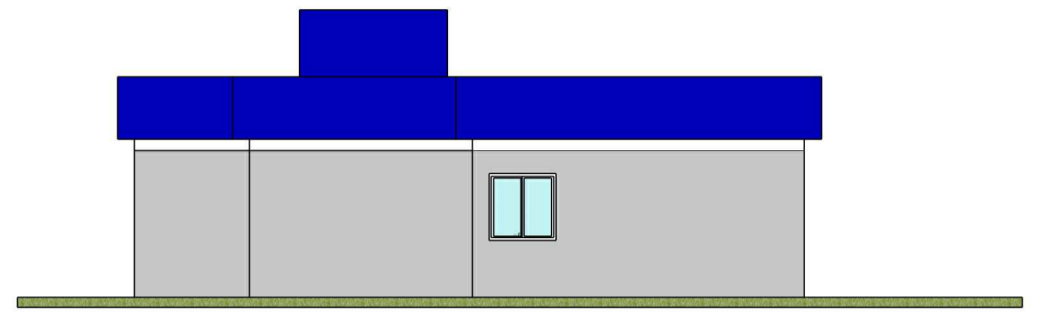
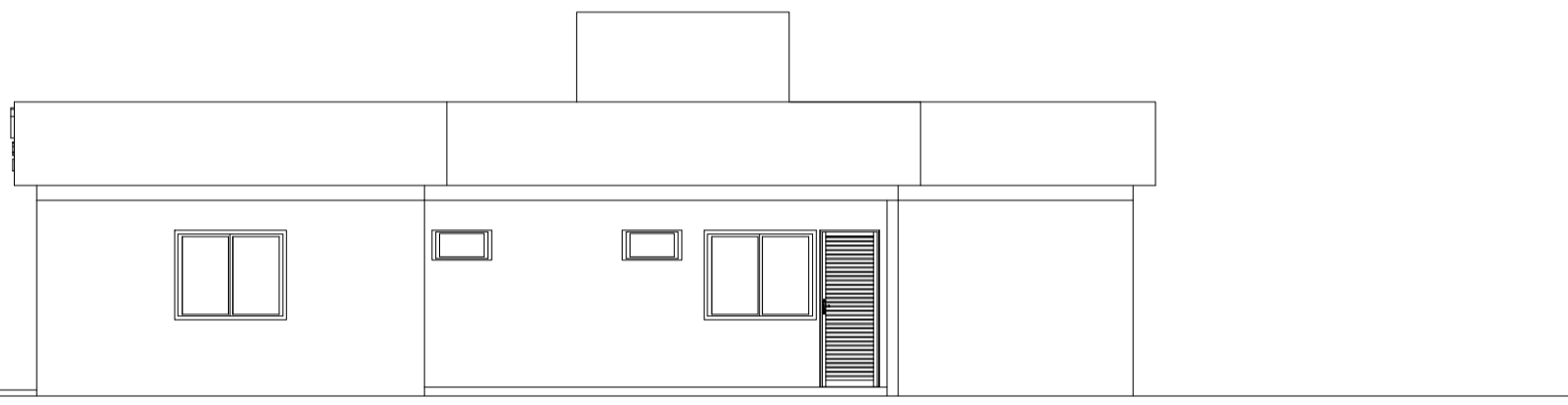


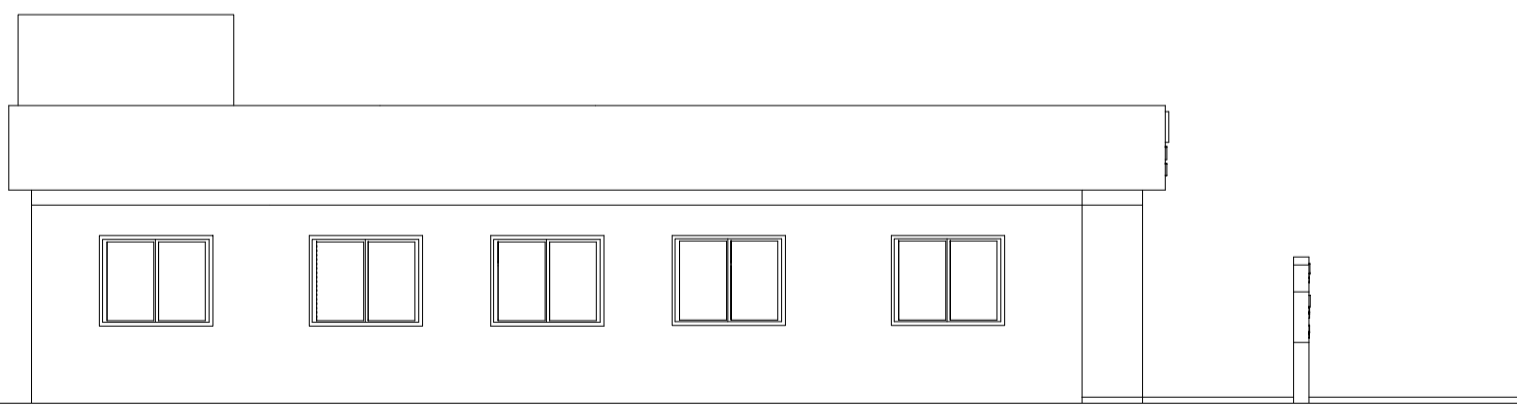
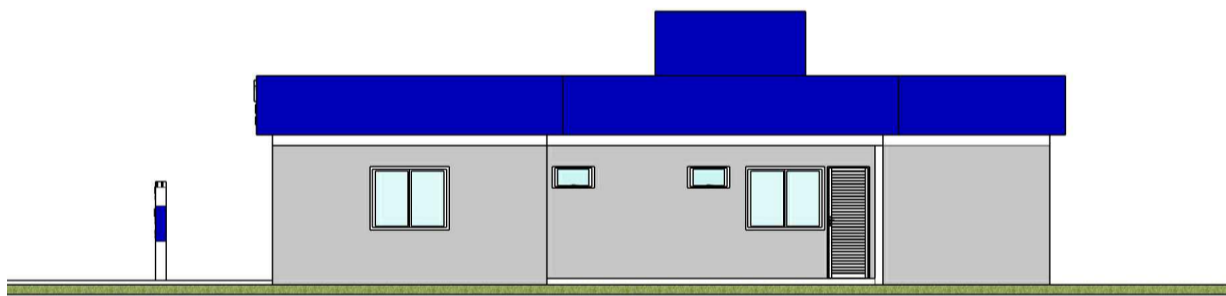
FACHADA FUNDOS



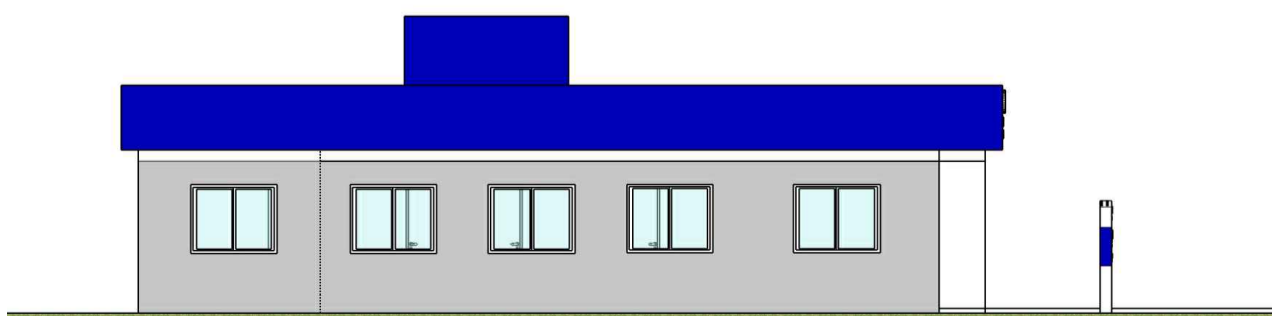
FACHADA FRONTAL



FACHADA LATERAL DIREITA




FACHADA LATERAL ESQUERDA



P. M. CRUZEIRO DO SUL

Aprovado em 31 / 10 / 2023

Carlos Alberto Persch
Eng. Civil - CREA 124398

PREFEITURA MUNICIPAL DE CRUZEIRO DO SUL SECRETARIA DO PLANEJAMENTO			
Obra		AVANÇAR SUAS RS - CRAS	
		FACHADAS	
Luma Camila Mallmann Arquiteta e Urbanista CAU-A 93839-4		Prefeito Municipal	
Desenho	Data	Área	 Prancha 5
Luma	OUTUBRO/2023	139,68m ²	